

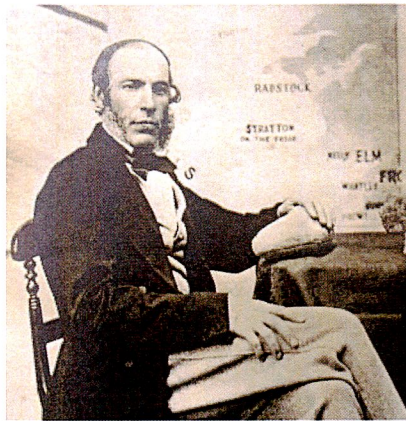
BATH ROYAL LITERARY & SCIENTIFIC INSTITUTION

16 Queen Square, Bath, BA1 2HN 01225 312084 www.brlsi.org

BRLSI Collection Talk

Charles Moore and his Fossils

Matt Williams, BRLSI Collections Manager

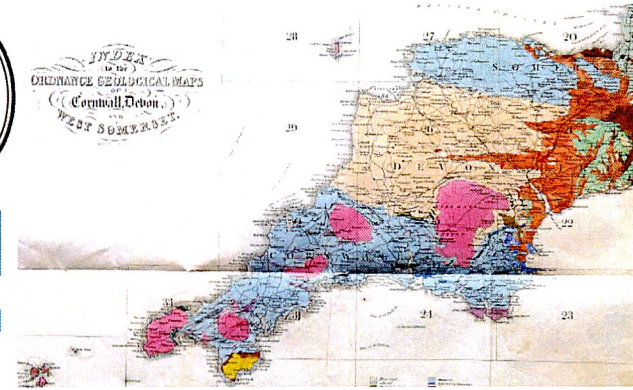
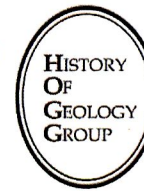


In 1854 Charles Moore joined the BRLSI and deposited his already substantial collections of fossils to be exhibited 'for the Public Benefit'. On his death in 1881, the BRLSI purchased Moore's collection from his widow for more than £1000. Now recognised as internationally important, this unique collection is still yielding new scientific discoveries and, now well cared for, is sure to inspire a deeper appreciation of geology and the history of life in future generations.



Wednesday 17 October 2018 • 7.30 pm

VISITORS WELCOME £4 • MEMBERS /STUDENTS £2



Collectors, Collections, and the Geology of Southwest Britain

18th September 2018



Olivenite on Quartz from Wheal Gorland, donated to the BRLSI by Francis Basset, 1st Baron de Dunstanville

Programme of talks:

10.00 Keynote Speaker – Steve Etches of The Etches Collection, Kimmeridge:

‘Stories from Deep Time’

10.30 Chris Duffin, Earth Science Department, Natural History Museum, London:

Charles Moore and Late Triassic vertebrates.

10.50 Matt Williams, Bath Royal Literary and Scientific Institution:

Strawberry Bank: A synopsis of the history, contents, and study of this little known Jurassic fossil site of extraordinary preservation from Somerset, England.

11.10 coffee break and poster viewing

11.40 Tom Cotterell, National Museum Wales:

Francis Basset, 1st Baron de Dunstanville and Basset, and his mineral collection.

12.00 Maurice Tucker, Bath Geological Society and Earth Sciences Department, Bristol University:

The source of stone for Roman Bath.

12.20 Owen Green and Tony Watts, Earth Sciences Department, Oxford University:

The Beacon Hill Silurian Volcano: An ancient analogue of a modern island arc?

12.40 Jan Freedman: Plymouth City Museum & Art Gallery:

Plymouth’s lost Pleistocene sites.

13.00 lunch break and poster viewing

14.10 Geoffrey Warrington, School of Geography, Geology & Environment, University of Leicester:

A spore from the Bristol area: the origin of Triassic palynology in Britain.

14.30 Simon Harris, British Geological Survey:

Lost and Found – the rediscovery of the Christian Malford Lagerstätte.

14.50 Roy Starkey, Independent researcher:

“Shall I send them to you now?”– Richard Talling of Lostwithiel, the greatest Cornish mineral dealer of all time.

Field trips for 19th September

Please sign up on the relevant sheet on the meeting on the 18th September

Morning

10:30 - 12:30 Gravestone geology walk in Haycombe Cemetery, Whiteway Rd Bath BA2 2RQ, led by Nina Morgan, science writer and Phillip Powell, Oxford University Museum of Natural History. You'll never look at cemeteries in the same way again!

Afternoon

2:30 - 4:30 Trip to examine exposures at Brown's Folly, Bathford, some of the best outcrops of the Chalford Oolite Formation, Great Oolite Group, the strata that provided stone for Bath for 2000 years. Led by Maurice Tucker, Bath Geological Society and Department of Earth Sciences, Bristol University

All day

Full day trip to Moons Hill volcanics, led by Tony Watts and Owen Green, Department of Earth Sciences, Oxford University

Poster presentations

David Hill and Natalie Watson, Alfred Gillett Trust:

The Alfred Gillet Fossil Collection of Marine Reptiles from the 19th Century Quarries of Street, Somerset.

Jan Freedman, Curator of Natural History, Plymouth Museums, Galleries, Archives:

The South West's Greatest Mineral Collectors

Graham P Hickman. Bath Geological Society:

Geology and hydrology of the Limpley Stoke valley and Somerset Coal Canal.

Deborah Hutchinson, Bristol Museum:

J.W. Tutcher (1858-1951) — Geologist and pioneer of scientific photography.

Nina Morgan and Philip Powell

The Geology of Gravestones



Hauffiopteryx typicus from the BRLSI Collection, excavated by Charles Moore from the Toarcian Lagerstätte of Strawberry Bank, Ilminster

15.10 Mike Howe, British Geological Survey:

BGS and the Royal Geological Society of Cornwall Collections.

15.30 Coffee break and poster viewing

16.00 Karen Cook, Kansas University, US:

Reflections across the Pond: Cuvier and Brongniart's *Carte géognostique des environs de Paris* (1811) and Conybeare and De la Beche's *Map of 24 miles round the city of Bath coloured geologically* (1823).

16.20 Debbie Hutchinson, Bristol City Museums:

Mr Sanders' Map of Bristol.

16.40 Brian Rosen and Jill Darrell:

Stratigraphic solutions: fossil corals of William Smith and Arthur Vaughan from SW England.

17.00 Close of meeting and final information on fieldtrip options

17.15 end

Nearby places to eat and drink

This list is by no means comprehensive, but should give you a good start in your search for lunch, dinner, or a pint.

BRLSI is marked with a 

A There are numerous good cafes and eateries including Boston Tea Party, Mission Burrito, Phat Yak, and Yum Yum Thai on Kingsmead Square,

B Excellent sandwiches can be obtained from Chandos Deli on George Street, and a number of reasonable restaurants can also be found there.

C The Raven is a very good traditional pub, tucked away on Queen Street, serving pie and mash, etc.

D The Salamander Pub, Ole Tapas, and Firehouse Rotisserie are situated on John Street.

E The Scallop Shell is a well regarded fish and chip restaurant on Monmouth Street, just past the New Inn, another decent pub.

